

This is a downloadable version of the manual. A partial download may not contain all pertinent information. Make Sure to read Chapter 1, Safety!
Due to ongoing upgrades specifications may change without notice, contact a Monosem Rep for current information.

TABLE OF CONTENTS

1. SAFETY

2. PREPARATION

3. FRAME

4. TRANSMISSION

5. DRIVE

6. ROW UNIT

7. OPTIONAL EQUIPMENT

This is a downloadable version of the manual. A partial download may not contain all pertinent information. Make Sure to read Chapter 1, Safety!
Due to ongoing upgrades specifications may change without notice, contact a Monosem Rep for current information.

TRANSMISSION

7" x 7" 3pt Mounted and Stacking Toolbar Frame

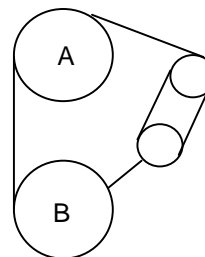
PLANTING RATE CHART

3pt Mounted & Stacking Planters

The following planting distances were obtained with standard assembly and sprocket system. Additional settings are possible by using different combinations or special sprockets. Please consult us in case you have such special requirements.

Important: Poor alignment of the sprockets of the seed spacing gearbox and stiffness of the chain will cause premature side wear on the pinions. Make sure the chains are tight and properly lubricated, and the tires are properly inflated.

The indicated spacings are theoretical and may vary from 5-10% depending on soil conditions.



SOWING DISTANCES

Number of
Holes in the Transmission sprocket selection
Seed Disc

	A	26	24	23	26	24	23	24	23	19	19	17	18	19	17	18	17	14	14	14
	B	17	17	19	23	23	24	26	26	23	24	23	26	28	26	28	28	24	26	28
		Seed Spacing (inches)																		
9		7.9	8.6	10.0	10.7	11.6	12.7	13.1	13.7	14.7	15.3	16.4	17.5	17.9	18.6	18.9	20.0	20.8	22.5	24.3
12		6.0	6.4	7.5	8.1	8.7	9.5	9.9	10.3	11.0	11.5	12.3	13.1	13.4	13.9	14.2	15.0	15.6	16.9	18.2
18		4.0	4.3	5.0	5.4	5.8	6.3	6.6	6.9	7.3	7.7	8.2	8.8	8.9	9.3	9.4	10.0	10.4	11.3	12.1
24		3.0	3.2	3.8	4.0	4.4	4.7	4.9	5.1	5.5	5.7	6.2	6.6	6.7	7.0	7.1	7.5	7.8	8.5	9.1
30		2.4	2.6	3.0	3.2	3.5	3.8	3.9	4.1	4.4	4.6	4.9	5.3	5.4	5.6	5.7	6.0	6.2	6.8	7.3
36		2.0	2.1	2.5	2.7	2.9	3.2	3.3	3.4	3.7	3.8	4.1	4.4	4.5	4.6	4.7	5.0	5.2	5.6	6.1
40		1.8	1.9	2.3	2.4	2.6	2.8	3.0	3.1	3.3	3.4	3.7	3.9	4.0	4.2	4.2	4.5	4.7	5.1	5.5
48		1.5	1.6	1.9	2.0	2.2	2.4	2.5	2.6	2.8	2.9	3.1	3.3	3.4	3.5	3.5	3.7	3.9	4.2	4.6
60		1.2	1.3	1.5	1.6	1.7	1.9	2.0	2.1	2.2	2.3	2.5	2.6	2.7	2.8	2.8	3.0	3.1	3.4	3.6
72		1.0	1.1	1.3	1.3	1.5	1.6	1.6	1.7	1.8	1.9	2.1	2.2	2.2	2.3	2.4	2.5	2.6	2.8	3.0
90		0.79	0.86	1.00	1.07	1.16	1.27	1.31	1.37	1.47	1.53	1.64	1.75	1.79	1.86	1.89	2.00	2.08	2.25	2.43
120		0.60	0.64	0.75	0.81	0.87	0.95	0.99	1.03	1.10	1.15	1.23	1.31	1.34	1.39	1.42	1.50	1.56	1.69	1.82

TRANSMISSION

7" x 7" 3pt Mounted & Stacking Toolbar Frame

**TWIN – ROW
 DENSITIES – SEED POPULATION CHART**

AVG SEED SPACING	ROW SPACING			
	30"	36"	38"	40"
1"	418,400	348,800	330,000	313,600
2"	209,200	174,400	165,000	156,800
2 3/4"	152,000	126,800	120,000	114,000
3 1/4"	128,800	107,200	101,600	96,400
3 1/2"	120,200	100,000	94,800	90,000
3 3/4"	111,600	93,000	88,000	83,600
4"	104,600	87,200	82,500	78,400
4 1/4"	98,400	82,000	77,600	73,800
4 1/2"	93,000	77,400	73,400	69,700
5"	83,600	69,700	66,000	62,800
5 1/2"	76,000	63,400	60,000	57,000
6"	69,700	58,000	55,000	52,220
6 1/2"	64,400	53,600	50,800	48,200
7"	60,100	50,000	47,400	45,000
7 1/2"	55,800	46,400	44,000	41,800
8"	52,500	43,700	41,400	39,350
8 1/2"	49,200	41,000	38,800	36,900
9"	46,600	38,850	36,774	34,950
9 1/2"	44,000	36,700	34,750	33,000
10"	41,900	34,950	33,074	31,450
10 1/2"	39,800	33,200	31,400	29,900
11 1/2"	36,400	30,300	30,700	27,300
12"	34,850	29,000	27,500	26,100
13"	32,200	26,800	25,400	24,100
13 1/2"	31,000	25,900	24,550	23,300
14 1/2"	28,976	24,100	22,850	21,700

Sync-Row® for MONOSEM Twin-Row

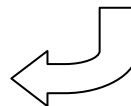
For Twin-Row planters with Optional Sync-Row® System

TIMING CHART 30" ROW SPACING

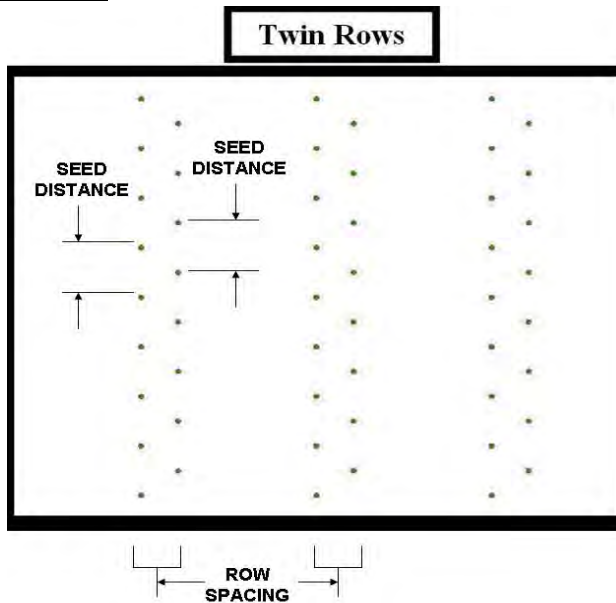
INSURE THESE VALUES ARE CORRECT FOR YOUR TWIN ROW PLANTER

Chart for Adjustable Metering Sprocket

Crop	Corn
Number of Seed Disk Cells (holes)	18
Row Spacing (inch)	30
Left Row Offset (inches)	18



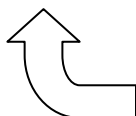
Seed Population (Seeds/Acre)	Seed Distance (inches)	Chart Number
50,000	8 3/8	8
49,000	8 1/2	8
48,000	8 3/4	10
47,000	8 7/8	10
46,000	9 1/8	10
45,000	9 1/4	12
44,000	9 1/2	12
43,000	9 3/4	14
42,000	10	14
41,000	10 1/4	16
40,000	10 1/2	16
39,000	10 3/4	16
38,000	11	18
37,000	11 1/4	18
36,000	11 1/2	0
35,000	12	0
34,000	12 1/4	2
33,000	12 3/4	2
32,000	13	2
31,000	13 1/2	4
30,000	14	4
29,000	14 1/2	6
28,000	15	6
27,000	15 1/2	8
26,000	16	8
25,000	16 3/4	8



ALIGN BOLT WITH CHART NUMBER

ZERO ALIGNS WITH THE BLACK ZERO-LINE

DETERMINE SEED POPULATION YOU ARE PLANTING (OR SEED DISTANCE) AND SET THE ADJUSTABLE SPROCKETS TO THE CORRECT CHART NUMBER



For Instructions on how to set the stagger, please refer to the Sync-Row® section in the Options section of this manual, toward the back of the manual.

Sync-Row® for MONOSEM Twin-Row

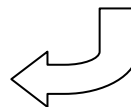
For Twin-Row planters with Optional Sync-Row® System

TIMING CHART 36" ROW SPACING

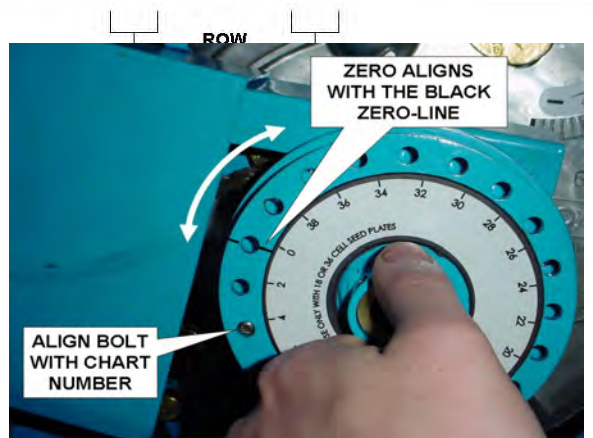
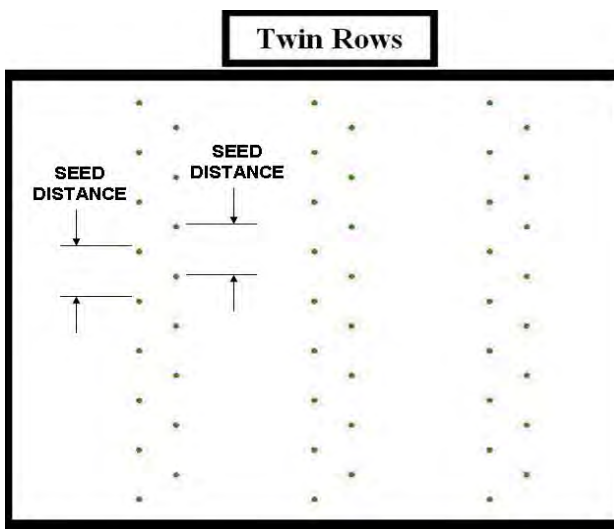
Chart for Adjustable Metering Sprocket

Crop	Corn
Number of Seed Disk Cells (holes)	18
Row Spacing (inch)	36
Left Row Offset (inches)	18

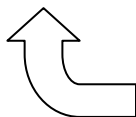
INSURE THESE VALUES ARE CORRECT FOR YOUR TWIN ROW PLANTER



Seed Population (Seeds/Acre)	Seed Distance (inches)	Chart Number
40000	8.75	10
39,000	8 7/8	10
38,000	9 1/8	12
37,000	9 3/8	12
36,000	9 5/8	14
35,000	10	14
34,000	10 1/4	16
33,000	10 1/2	16
32,000	11	18
31,000	11 1/4	18
30,000	11 1/2	0
29,000	12	0
28,000	12 1/2	2
27,000	13	2
26,000	13 1/2	4
25,000	14	4
24,000	14 1/2	6
23,000	15 1/4	6
22,000	15 3/4	8
21,000	16 1/2	8
20,000	17 1/2	10
19,000	18 1/4	10
18,000	19 1/4	12
17,000	20 1/2	12
16,000	21 3/4	14
15,000	23 1/4	14



DETERMINE SEED POPULATION YOU ARE PLANTING (OR SEED DISTANCE) AND SET THE ADJUSTABLE SPROCKETS TO THE CORRECT CHART NUMBER



For Instructions on how to set the stagger, please refer to the Sync-Row® section in the Options section of this manual, toward the back of the manual.

Sync-Row® for MONOSEM Twin-Row

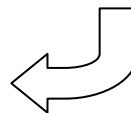
For Twin-Row planters with Optional Sync-Row® System

TIMING CHART 38" ROW SPACING

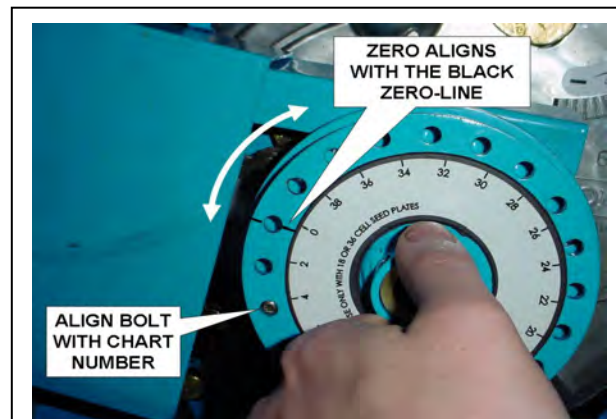
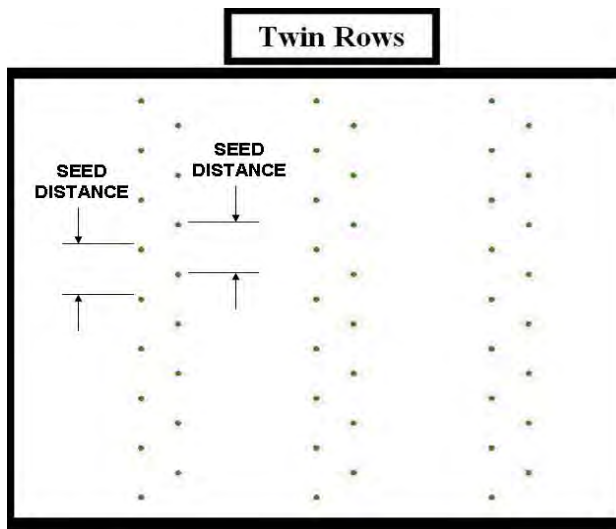
INSURE THESE VALUES ARE CORRECT FOR YOUR TWIN ROW PLANTER

Chart for Adjustable Metering Sprocket

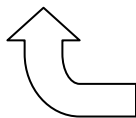
Crop	Corn
Number of Seed Disk Cells (holes)	18
Row Spacing (inch)	38
Left Row Offset (inches)	18



Seed Population (Seeds/Acre)	Seed Distance (inches)	Chart Number
50,000	6 5/8	16
49,000	6 3/4	18
48,000	6 7/8	18
47,000	7	0
46,000	7 1/8	0
45,000	7 3/8	2
44,000	7 1/2	2
43,000	7 3/4	4
42,000	7 3/4	4
41,000	8	6
40,000	8 1/4	6
39,000	8 1/2	8
38,000	8 3/4	10
37,000	9	10
36,000	9 1/4	12
35,000	9 1/2	12
34,000	9 3/4	14
33,000	10	14
32,000	10 1/4	16
31,000	10 3/4	16
30,000	11	18
29,000	11 1/2	18
28,000	11 3/4	0
27,000	12 1/4	0
26,000	12 3/4	2
25,000	13 1/4	4



DETERMINE SEED POPULATION YOU ARE PLANTING (OR SEED DISTANCE) AND SET THE ADJUSTABLE SPROCKETS TO THE CORRECT CHART NUMBER



For Instructions on how to set the stagger, please refer to the Sync-Row® section in the Options section of this manual, toward the back of the manual.

Sync-Row® for MONOSEM Twin-Row

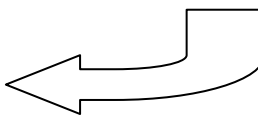
For Twin-Row planters with Optional Sync-Row® System

TIMING CHART 40" ROW SPACING

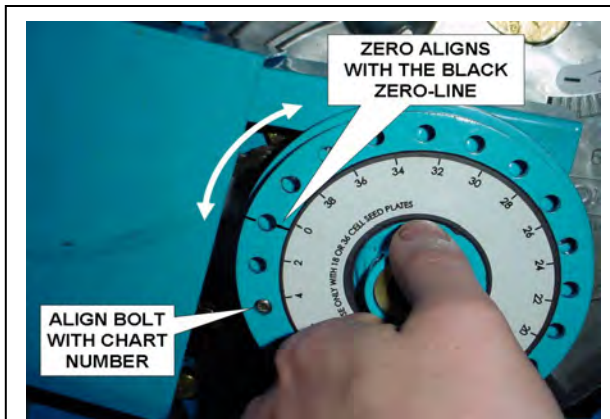
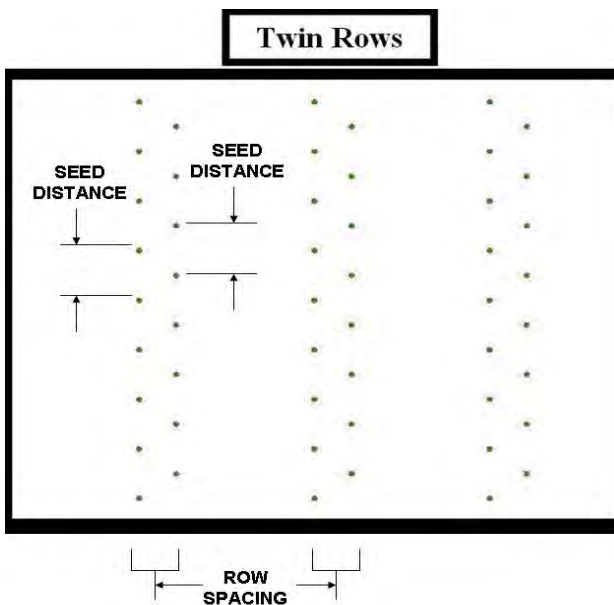
Chart for Adjustable Metering Sprocket

Crop	Corn
Number of Seed Disk Cells (holes)	18
Row Spacing (inch)	40
Left Row Offset (inches)	18

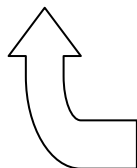
INSURE THESE VALUES ARE CORRECT FOR YOUR TWIN ROW PLANTER



Seed Population (Seeds/Acre)	Seed Distance (inches)	Chart Number
50,000	6 1/4	14
49,000	6 3/8	14
48,000	6 1/2	16
47,000	6 5/8	16
46,000	6 7/8	18
45,000	7	0
44,000	7 1/8	0
43,000	7 1/4	2
42,000	7 1/2	2
41,000	7 3/4	4
40,000	7 3/4	4
39,000	8	6
38,000	8 1/4	6
37,000	8 1/2	8
36,000	8 3/4	10
35,000	9	10
34,000	9 1/4	12
33,000	9 1/2	12
32,000	9 3/4	14
31,000	10	14
30,000	10 1/2	16
29,000	10 3/4	18
28,000	11 1/4	18
27,000	11 1/2	0
26,000	12	0
25,000	12 1/2	2



DETERMINE SEED POPULATION YOU ARE PLANTING (OR SEED DISTANCE) AND SET THE ADJUSTABLE SPROCKETS TO THE CORRECT CHART NUMBER

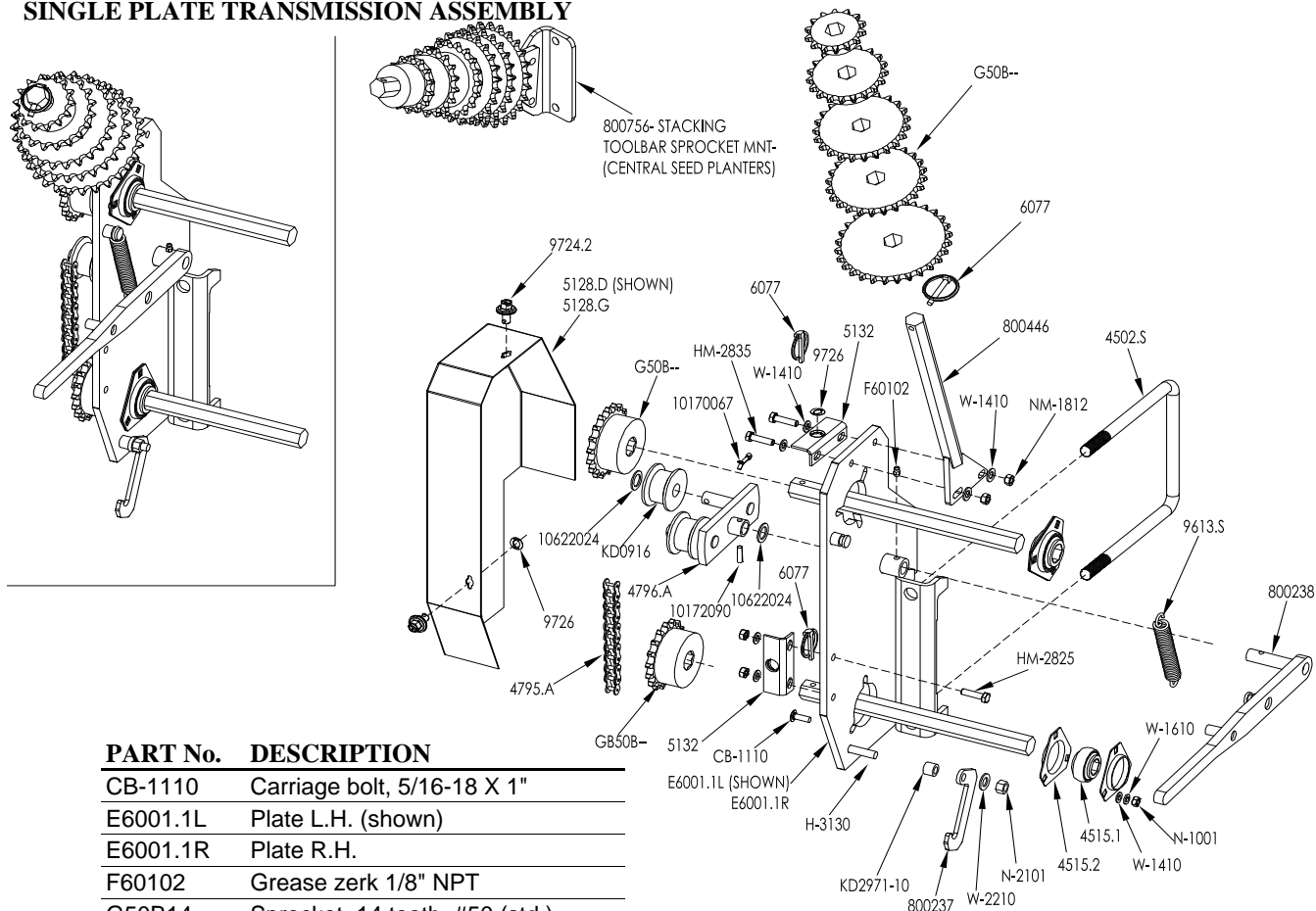


For Instructions on how to set the stagger, please refer to the Sync-Row® section in the Options section of this manual, toward the back of the manual.

TRANSMISSION

7" x 7" 3pt Mounted and Stacking Toolbar Frame

SINGLE PLATE TRANSMISSION ASSEMBLY



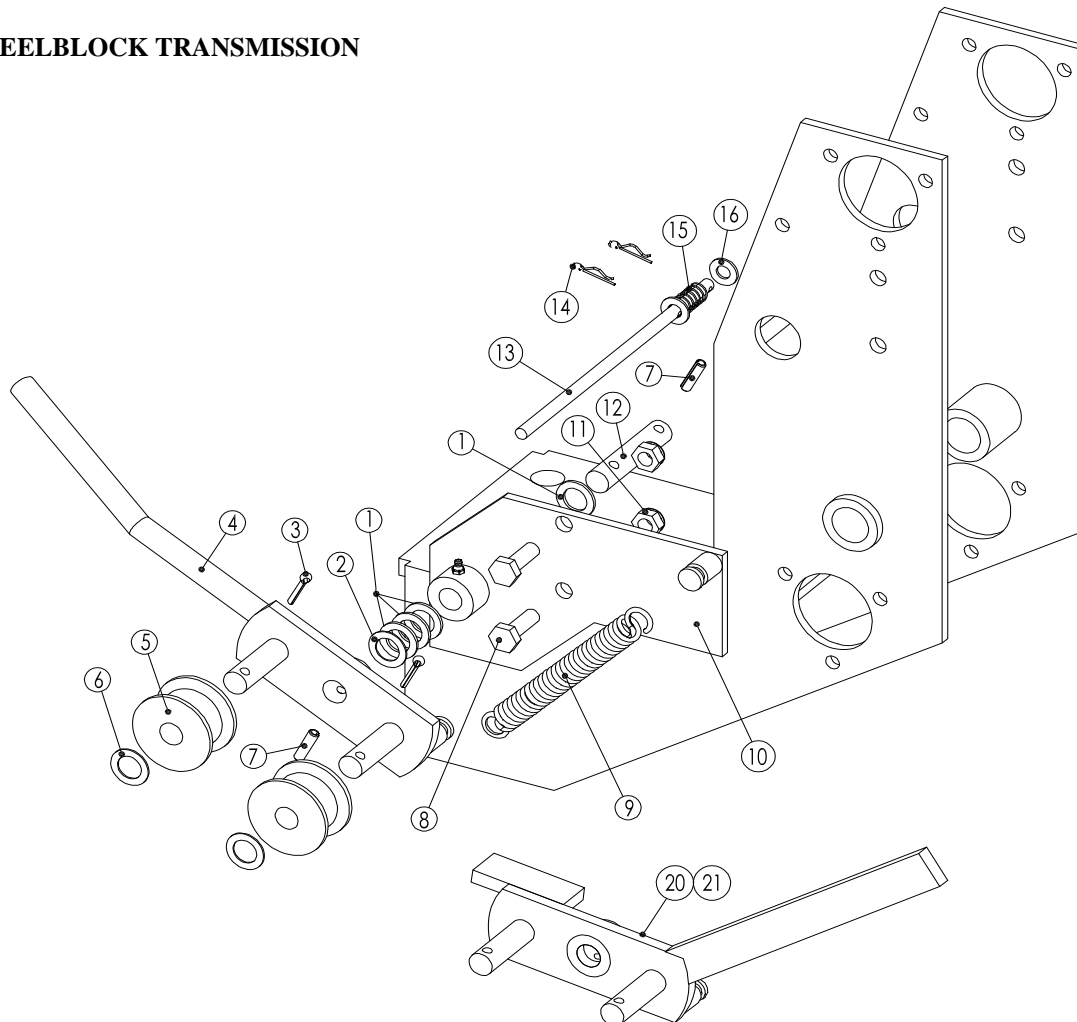
PART No.	DESCRIPTION
CB-1110	Carriage bolt, 5/16-18 X 1"
E6001.1L	Plate L.H. (shown)
E6001.1R	Plate R.H.
F60102	Grease zerk 1/8" NPT
G50B14	Sprocket, 14 tooth, #50 (std.)
G50B15	Sprocket, 15 tooth, #50
G50B17	Sprocket, 17 tooth, #50 (std.)
G50B18	Sprocket, 18 tooth, #50
G50B19	Sprocket, 19 tooth, #50 (std.)
G50B21	Sprocket, 21 tooth, #50
G50B23	Sprocket, 23 tooth, #50 (std.)
G50B24	Sprocket, 24 tooth, #50 (std.)
G50B25	Sprocket, 25 tooth, #50
G50B26	Sprocket, 26 tooth, #50 (std.)
G50B27	Sprocket, 27 tooth, #50
G50B28	Sprocket, 28 tooth, #50 (std.)
G50B30	Sprocket, 30 tooth, #50
H-3130	Hex bolt 3/8-16 X 1 3/4"
HM-2825	Hex Bolt 8x25mm
HM-2835	Hex Bolt 8x35mm
KD0916	Idler roller
KD2971-10	Bushing
N-1001	5/16 Hex nut
N-2101	Nylock nut 3/8"
NM-1812	Nylock 8mm
W-1410	Washer, 5/16" SAE
W-1610	Lock washer, 5/16"

PART No.	DESCRIPTION
W-2210	Washer, 3/8" USS
4795.A	Chain #50 X 72 pitch
4796.A	Idler bracket
4502.S	U-Bolt 7x7x 5/8"-11
4515.1	Bearing only (205KRRB2)
4515.2	Flangette only (2 req'd)
5128.D	Shield Trans Right
5128.G	Shield Trans Left
5132	Receiving Bracket for Camloc
6077	Lynch pin M6
800237	Hook
800238	Handle
800446	Storage rod for sprockets
800756	Storage rod Mount
9613.S	Spring
9724.2	Camloc for Trans. Shield
9726	Retaining Washer for Camloc
10622024	Washer M16.5 X 26 X 1
10170067	Cotter pin M5 X 40
10172090	Roll pin M6 X 25

TRANSMISSION

7" x 7" Stacker Bar

WHEELBLOCK TRANSMISSION



ITEM	PART No.	DESCRIPTION
1	10622026	Washer 16.5x26x2mm
2	10622024	Washer 16.5x26x1mm
3	10170032	Cotter pin M3.5x30
4	E3097	Idler arm
5	KD0916	Chain roller
6	10622024	Washer 16.5x26x1mm
7	10172090	Roll pin M6x25
8	HM-41030	Hex bolt M10x30
9	4334	Spring
10	E3096.L	Transmission plate (shown)
	E3096.R	Transmission plate
11	NM-21015	Hex nut M10
12	800160	Pin
13	E3095	Safety pin
14	K10670	Hairpin clip
15	5681.B	Spring
16	10620069	Washer 8.5x20x1.5mm
17	4793.A	Storage rod
18	6077	Lynch pin 1/4"

ITEM	PART No.	DESCRIPTION
19	G50B14	Sprocket, 14 tooth, #50 (std.)
	G50B15	Sprocket, 15 tooth, #50
	G50B17	Sprocket, 17 tooth, #50 (std.)
	G50B18	Sprocket, 18 tooth, #50
	G50B19	Sprocket, 19 tooth, #50 (std.)
	G50B21	Sprocket, 21 tooth, #50
	G50B23	Sprocket, 23 tooth, #50 (std.)
	G50B24	Sprocket, 24 tooth, #50 (std.)
	G50B25	Sprocket, 25 tooth, #50
	G50B26	Sprocket, 26 tooth, #50 (std.)
	G50B27	Sprocket, 27 tooth, #50
	G50B28	Sprocket, 28 tooth, #50 (std.)
	G50B30	Sprocket, 30 tooth, #50
	E3098.L	L.H. ASSEMBLY
	E3098.R	R.H. ASSEMBLY
20	200169	Idler arm Left- Stacking Toolbar
21	200170	Idler arm Right- Stacking Toolbar