

TABLE OF CONTENTS

1. SAFETY

2. PREPARATION

3. FRAME

4. TRANSMISSION

5. DRIVE

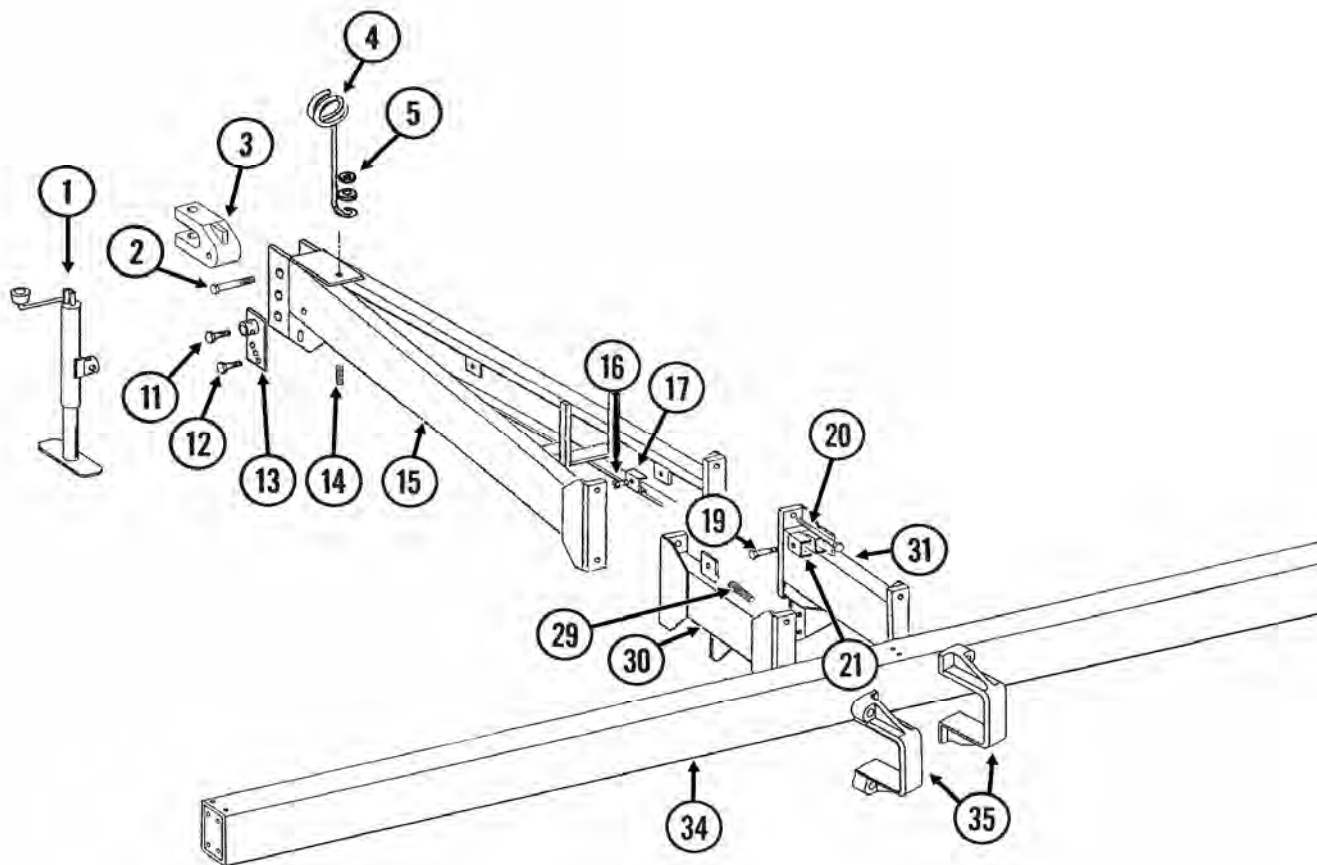
6. ROW UNIT

7. OPTIONAL EQUIPMENT

FRAME

Pull-Type, Rigid Frame

The Pull-Type Rigid Frame consists of a 7" x 7" x 3/8" toolbar. The hitch is formed and welded with adjustable, malleable iron double hitch clevis with a 1 5/16" pin hole.



PARTS

ITEM	PART No.	DESCRIPTION
1	K4100-02	Jack assembly
	KR0255	Repair kit (chain and pin)
2	K10169	Hex bolt 1 1/4-7 x 6"
3	KB0156	Clevis
4	KD7140	Hose holder
5	K10348	Hex bolt 1/2-13 x 5"
	K10216	Washer 1/2" USS
	K10228	Lock washer 1/2"
	K10102	Hex nut 1/2-13
11	K10007	Hex bolt 5/8-11 x 1 1/2"
	K10107	Lock nut 5/8-11
12	K10017	Hex bolt 1/2-13 x 1 1/2"
	K10216	Washer 1/2" USS
13	KA7909	Jack adjustment bracket
14	KD5888	Spring

ITEM	PART No.	DESCRIPTION
15	KA8670	Hitch
16	K10047	Hex bolt 3/8-16 x 1 3/4"
	K10108	Lock nut 3/8-16
17	KD5875	Hose clamp 9/16" x 2 1/2" x 2"
19	K10048	Hex bolt 3/8-16 x 2"
	K10108	Lock nut 3/8-16
20	K10993	Hex bolt 1"-8 x 8 1/2" GR.8
	K10647	Hex nut 1"-8 GR.8
21	KD6027	Hose clamp 3/4" x 2 1/2" x 2 1/2"
29	K11085	Flanged bolt 12pt 1-14 x 3"
30	KA5271	Hitch extension L.H.
31	KA5272	Hitch extension R.H.
34	4500.2	Tool bar 7" x 7" x 3/8" wall
35	KB0329	Hitch clamp

FRAME

Pull-Type, Rigid Frame

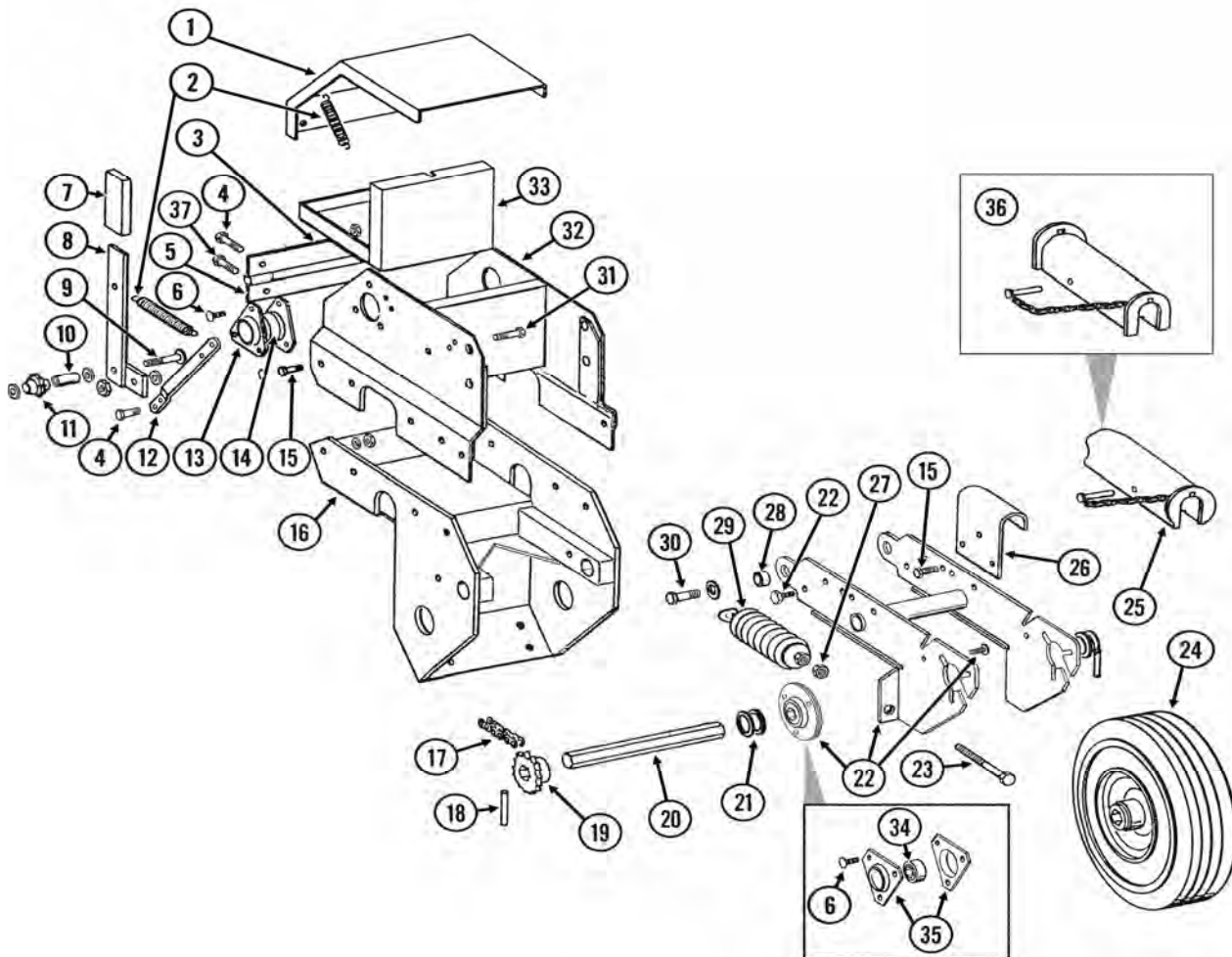
CONTACT DRIVE WHEEL

The contact drive system is a spring-loaded contact drive tire (4.10 x 6") with No. 40 chain. There is one contact drive wheel on a 4-row planter; two on the 6-row, 8-row, and 12-row; and four contact drive wheels on the 16-row and the 24-row planters.

There are 2 down pressure springs on each contact drive wheel. The down pressure is factory preset and should not need further adjustment. The spring tension is set leaving 2 1/4" between the spring plugs and the bolt head. Tire pressure should be checked regularly and maintained as follows, Contact drive: 4.1" x 6" -50 PSI.

See PREPARING THE PLANTER for information on Lubrication or replacement of the Wheel Bearings.

ASSEMBLY



PARTS

FRAME

Pull-Type, Rigid Frame

CONTACT DRIVE WHEEL

ASSEMBLY

ITEM	PART No.	DESCRIPTION
1	KA5182	Cover
2	KD5857	Spring
3	KD5790	Hinge w/pins (male)
4	K10023	Hex bolt 1/4-20 x 3/4
	K10227	Lock washer 1/4
	K10103	Hex nut 1/4-20
5	KD5789	Hinge (female)
6	K10303	Carriage bolt 5/16-18 x 1
7	KD5827	Cover
8	KA5157	Idler arm L.H.
	KA5158	Idler arm R.H.
9	K10306	Carriage bolt 3/8-16 x 2
	K10203	Washer 3/8 (as required)
	K10210	Washer 3/8 (as required)
	K10108	Lock nut 3/8-16
10	KD1026	Sleeve 1 3/16
11	KD7426	Sprocket 12 tooth
12	KD5860	Bar
13	K3400-01	Flangette
	K10232	Lock washer 5/16
	K10219	Washer 5/16
	K10106	Hex nut 5/16-18
14	K2100-03	Bearing 7/8 hex bore spherical
15	K10001	Hex bolt 3/8-16 x 1
	K10229	Lock washer 3/8
	K10101	Hex nut 3/8-16
16	KA5122	Wheel tower clamp
17	K3310-132	Chain, No. 40 x 132 pitches
	KR0912	Connector link No. 40
18	K10602	Spring pin 1/4 x 1 1/2
19	KA5105	Sprocket 15 tooth
20	KD6825	Hex shaft 7/8 x 10 3/8" (2 holes)
21	K10233	Bushing 1 x 10GA
22	K1K213	Arm kit (Items 18, 20, 22, 23 and 27)
	K10303	Carriage bolt 5/16-18 x 1
	K10232	Lock washer 5/16
	K10106	Hex nut 5/16-18
	KA9846	Flanged bearing 7/8 hex bore
	K10055	Hex bolt 5/8-11 x 1 1/4
	K10107	Lock nut 5/8-11

ITEM	PART No.	DESCRIPTION
23	K10890	Hex bolt 1/2-13 x 4
24	KA5090	Tire and rim assembly
	KD5753	Tire 4.10" x 6"
	KD5752	Tube
25	KA9870	Lockup w/pin
26	KD7944	Mount
27	K10501	Hex jam nut 1/2-13
28	KB0218	Bushing 21/32" x 7/8" x 19/32"
29	KA2068	Spring
30	K10751	Hex bolt 5/8-18 x 1 3/4
	K10235	Bushing 7/8 x 14GA
	KD7805	Special washer
	K10412	Lock nut 5/8-11
31	K10001	Hex bolt 3/8-16 x 1
	K10229	Lock washer 3/8
	K10370	Bushing 3/8 x 22GA
	KD5756	Special nut
32	KA5118	Mount
33	KA7235	Tool box insert
34	K10064	Hex bolt 1/4-20 x 1
	K10209	Washer 1/4
	K10227	Lock washer 1/4
	K10103	Hex nut 1/4-20
35	KD2558	Lynch pin 1/4
36		see 25

PARTS

FRAME

Pull Type, Rigid Frame

TRANSPORT WHEEL

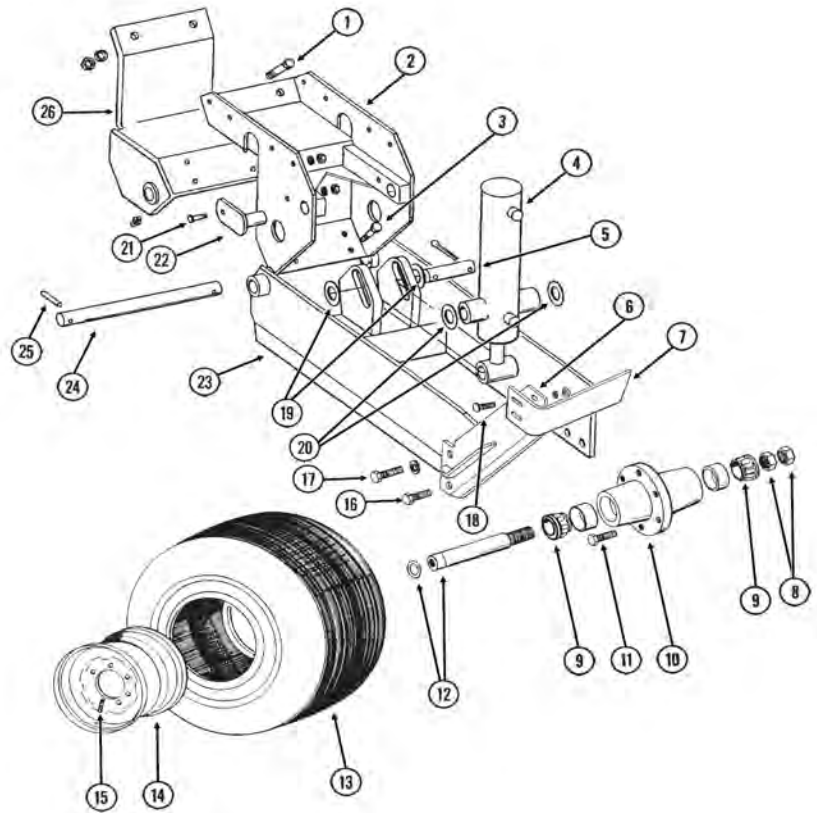
Tire pressure should be checked regularly and maintained as follows, Transport/Ground Drive 7.5" x 20" -40 PSI. For information on bearings, see PREPARING THE PLANTER. Due to the clearance between the wheel assembly and the transport tire, a tire scraper should always be used. The tire scraper will prevent a buildup of dirt and mud between the wheel arm assembly and the tire. Adjust the scraper so it does not contact the tire.

Ridge Planting

For ridge planting, to raise the bar height 3", mount the 20" tires in the lower rear holes in the ground drive wheel arm and springs in the lower set of mounting holes in the wheel module mount and raise the hitch height to maintain a level position from side to side and front to back.

ASSEMBLY

ITEM	PART No.	DESCRIPTION
1	K10009	Hex bolt 5/8-11 x 2 1/2
	K10230	Lock washer 5/8
	K10104	Hex nut 5/8-11
2	KA5122	Wheel tower clamp
3	K10008	Hex bolt 5/8-11 x 2
	KD7805	Special washer
	K10230	Lock washer 5/8
	K10104	Hex nut 5/8-11
4		See Hydraulic cylinders
5	KD5841	Pin 1 1/4" x 5 5/8"
	KD10460	Cotter pin 1/4 x 2
6	KA7376	Scraper mount
7	KD10010	Scraper
8	K11081	Hex jam nut 1 1/2-12
9	KA0895	Bearing
10	KA2148	Hub with cups pressed in
	KR0434	Bearing cup
11	KR0270	Lug bolt 9/16-18
12	KA2558	Spindle w/retaining ring
	KD11490	Retaining ring
13	KD13401	Tire 7.50 x 20, 8 ply
14	KA2142	Rim 5.50 x 20
15	KA7434	Valve stem
16	K10025	Hex bolt 3/4-10 x 1 1/2
	K10231	Lock washer 3/4
	K10105	Hex nut 3/4-10
17	K10026	Hex bolt 3/4-10 x 2
	K10231	Lock washer 3/4
18	K10636	Carriage bolt 1/2-13 x 1 1/2
	K10228	Lock washer 1/2
	K10216	Washer 1/2
	K10102	Hex nut 1/2-13
19	K10139	Washer 1 1/4
20	K10159	Bushing 1 1/4 x 10GA



ITEM	PART No.	DESCRIPTION
21	K10581	Hex bolt 1/2-13 x 2 1/4
	K10111	Lock nut 1/2-13
22	KA5121	Pin 2 1/8"
23	KA8839	Arm
24	KD11695	Pin 1 1/4" x 13 1/4"
25	K10610	Spring pin 3/8 x 2
26	KA9877	Clamp w/grease fittings
	K10640	Grease fitting 1/4-28
	KA2147	Hub and Spindle asm

PARTS

FRAME

Pull Type, Rigid Frame

HYDRAULIC LIFT

OPERATION

The planter lift system consists of a master cylinder on one side of the planter, and a slave cylinder on the other side of the planter. On 6 row and larger models, lift assist cylinders are also used.

With the master/slave hydraulic lift system, oil is forced into the butt end of the master and lift assist cylinders when the hydraulic lever on the tractor is moved to the raise position.

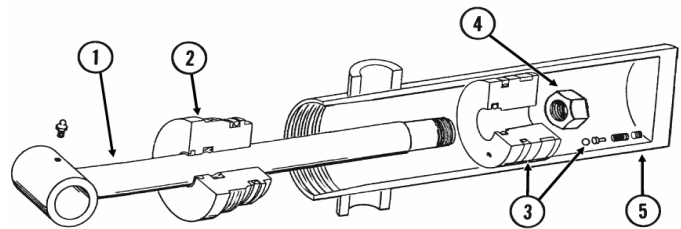
As the master cylinder is extended, oil from the rod end of the master cylinder is forced into the butt end of the slave cylinder. This displacement on the rod end of the master cylinder is equal to the displacement on the butt end of the slave cylinder. This causes the two cylinders to move at the same rate so the planter will raise and lower evenly.

IMPORTANT: The planter lift cylinders may get out of phase and the planter will lift unevenly. On each master cylinder and each slave cylinder, a valve located in the piston in the cylinder allows the lift system to be rephased when the cylinders are cycled by lowering the planter to the ground and holding the hydraulic lever for 5 seconds. Cycle the system until the planter lifts and lowers evenly.

ASSEMBLY

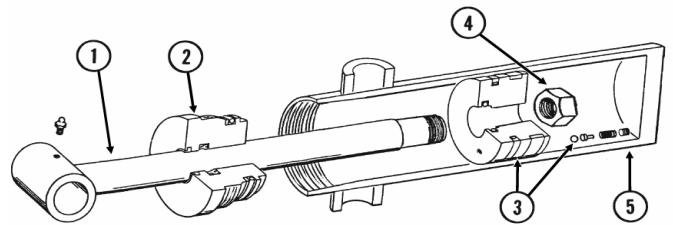
Master Cylinder

PART No.	DESCRIPTION
KA8917	Master cylinder complete, 3 1/2" x 8"
1 KA8912	Rod assembly
2 KD12507	Gland
3 KA8916	Piston w/rephasing valve
KR1169	Rephasing valve replacement kit
4 K10958	Lock nut, 1" -14
KR1528	Seal kit
5	Barrel is non-stock item



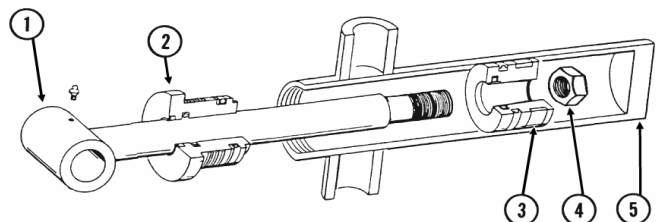
Slave Cylinder

PART No.	DESCRIPTION
KA8915	Slave lift cylinder, complete, 3 1/4" x 8"
1 KA8912	Rod assembly
2 KD12505	Gland
3 KA8914	Piston w/rephasing valve
KR1169	Rephasing valve replacement kit
4 K10958	Lock nut, 1" -14
KR1527	Seal kit
5	Barrel is non-stock item



Assist Cylinder

PART No.	DESCRIPTION
KA8828	Lift assist cylinder complete, 2 1/2" x 8"
1 KA8831	Rod assembly
2 KD11926	Gland
3 KD5956	Piston
4 K10958	Lock nut, 1" -14
KR1522	Seal kit



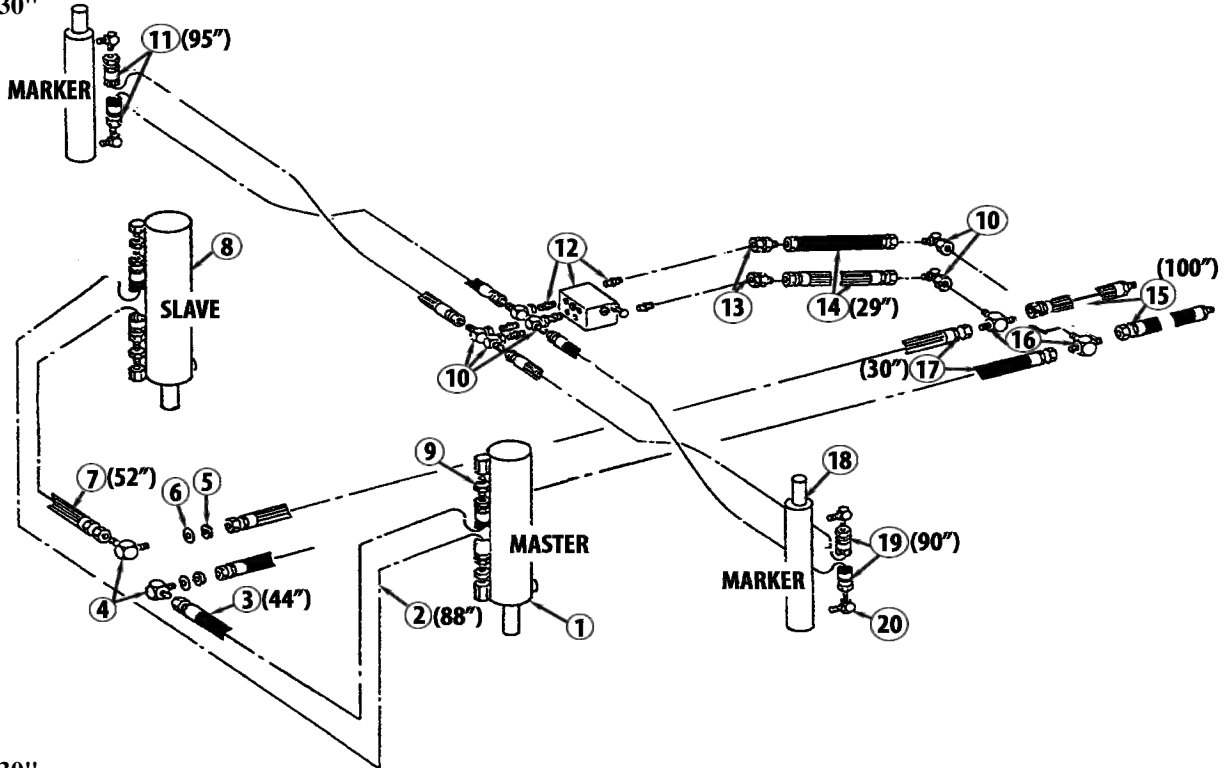
PARTS

FRAME

Pull Type, Rigid Frame

HYDRAULIC ASSEMBLY

4-Row 30"



6-Row 30"

