

**TABLE OF CONTENTS**

---

1. SAFETY

2. PREPARATION

**3. FRAME**

4. TRANSMISSION

5. DRIVE

6. ROW UNIT

7. OPTIONAL EQUIPMENT

This is a downloadable version of the manual. A partial download may not contain all pertinent information. Make sure to read Chapter 1, Safety!  
Due to ongoing upgrades specifications may change without notice, contact a Monosem Rep for current information.



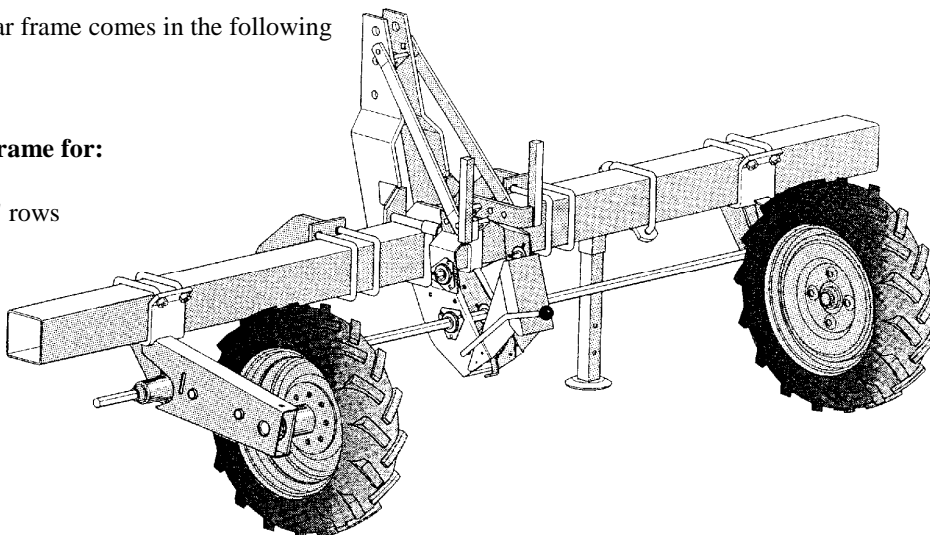
## FRAME

### 5" x 5" Mounted Toolbar

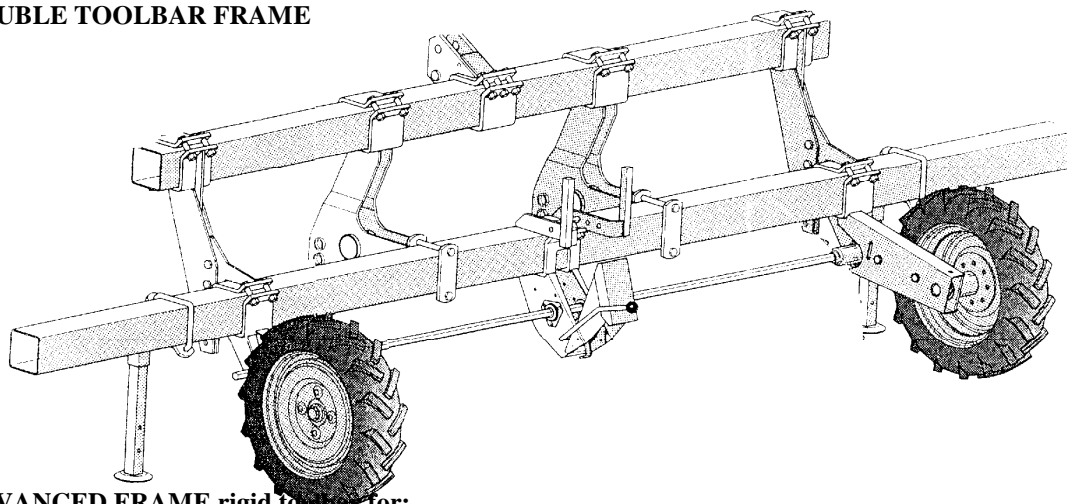
The 5x5 mounted rigid toolbar frame comes in the following configurations:

#### SINGLE RIGID Toolbar Frame for:

- 1-row
- 2 and 4-row 30"-40" rows
- 6-row 22"-30" rows
- 8-row 22" row



#### DOUBLE TOOLBAR FRAME

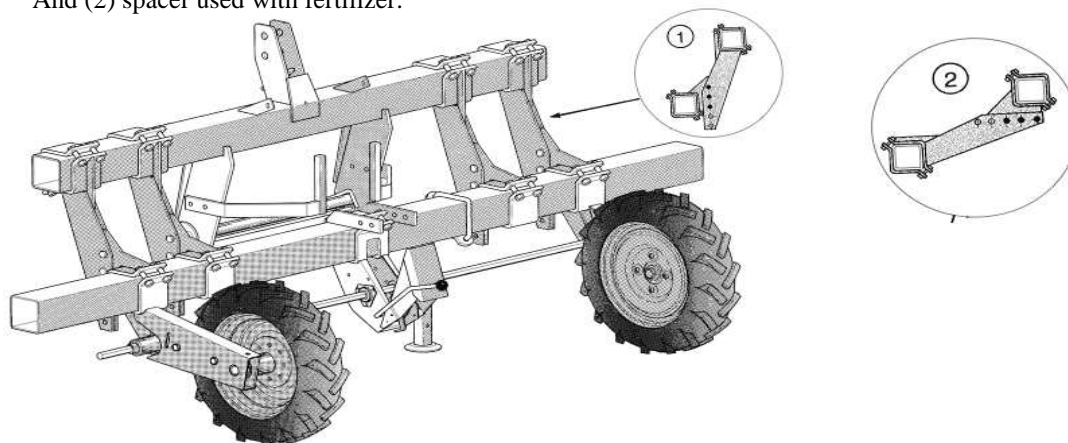


#### ADVANCED FRAME rigid toolbar for:

This frame is used when a unit needs to be placed in the center of the main toolbar. This toolbar gives you the option of a 1, 3, 5, or 9-row planter.

The photo shows spacers

- (1) Used without fertilizer
- And (2) spacer used with fertilizer.



## FRAME

### 5" x 5" Mounted Toolbar

#### TOOLBAR STAND

One or two toolbar stands are located on the front of the main frame. Position the stands so that they are not directly behind the tire of the tractor. Planters with front mounted drive wheels do not require toolbar stands.

#### TOOLBAR

The standard 5"x5" toolbar comes in these sizes:

8' 2" – 11' 6" – 13' 2" – 14' 9" - 5mm thickness

20' – reinforced 5mm thickness

14' 9" – 20' – 23' – 25' – 6mm thickness

#### HEX SHAFT, COUPLERS, BUSHING STOPS

The drive wheels drive the hex shaft; the hex shaft then turns the transmission that drives the planter units. It is important to visually check the hex shaft each season to make sure it is straight. Couplers can be used to extend a shaft. The bushing stops prevent the hex shaft from working or moving from side to side, while in operation.


#### FIXED DRIVE WHEEL

The fixed drive wheel block is mounted on the 5"x5" toolbar frame with (2) 16mm 'V' bolts and (4) 16mm locking nuts.


Tire size = 5.90" x15"

PSI. = 36

**Check and maintain the tire pressure regularly.** There is a right and left mounting for the wheel blocks. To determine the right and left hand side of the planter, stand behind the planter and face it. The back of the planter is the side that is not hooked up to the tractor.


 **DANGER** Rim and tire servicing can be dangerous.

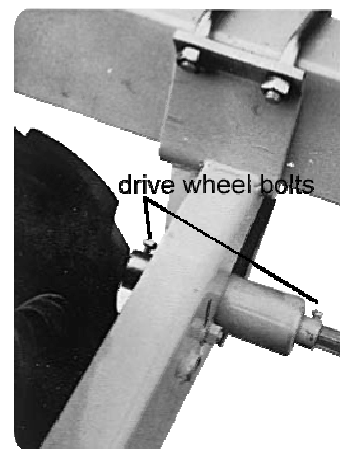
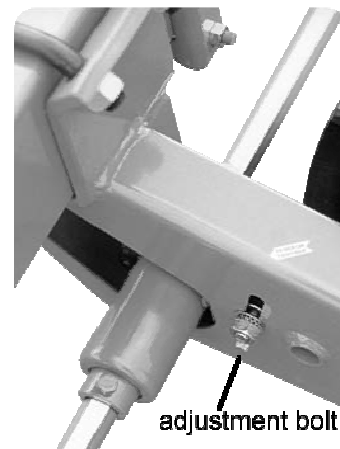
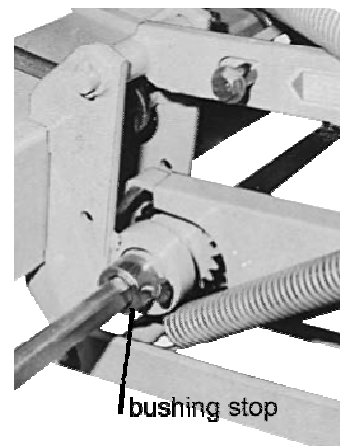
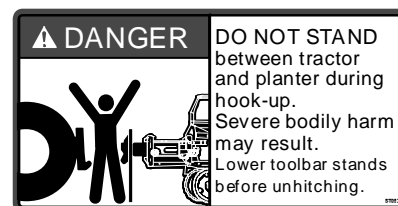
**Explosive separation of a tire and rim parts can cause serious injury or death!**

 **Do not attempt to mount a tire unless you have the proper equipment and experience to perform the job. Only properly trained and equipped people should do this job. Maintain the correct tire pressure. Do not inflate the tires above the recommended pressure.**

When inflating tires, use a slip-on air chuck and extension hose long enough to allow you to stand to one side, and not in front of, or over, the tire assembly. Use a safety cage to enclose the tire and assembly when inflating.

Inspect tires and wheels daily. Do not operate with low pressure, cuts, bubbles, damaged rims or missing lug bolts and nuts.

 **Important:** Check that the chains for the drive wheel blocks are tight. If not, tighten **adjustment bolt** in an "up" position. Also, check that the **bushing stops** of the upper hex shaft and the **bolts of the drive wheel** blocks are tight. The bolts or the drive wheel blocks secure the lower hex shaft.



## FRAME

---

### 5" x 5" Mounted Toolbar

#### ADJUSTABLE DRIVE WHEEL

The adjustable drive wheel block is mounted on the 5"x5" toolbar frame with a counter clamp. The adjustable drive wheel block allows you to adjust the level of the toolbar and adjust the height for variances in the seed bed.

Either a screw-type or a newer spring-loaded adjustment regulates the wheel block. They are both interchangeable within the wheel block. The screw-type adjustment is rigid, while the spring-loaded adjustment acts as a 'shock absorber' and allows for a flex up and down of the wheel to ride the contours of the land. The spring-loaded adjustment can also be made rigid by tightening the nylon locknut clockwise on top of the housing. This will compress the spring inside the housing and minimize any upward or downward travel of the wheel block.

#### ADJUSTING THE DRIVE WHEEL

To lower the drive wheel, turn the hand wheel counterclockwise.

To raise the drive wheel turn the hand wheel clockwise.

There is a right and left mounting for the wheel blocks which is determined by standing behind the planter as it would be hooked up to the tractor.

Tire size = 5.90" x 15" and  
PSI = 36

The tire pressure should be checked and regularly maintained.



**DANGER** Rim and tire servicing can be dangerous. Explosive separation of a tire and rim parts can cause serious injury or death!



**Do not attempt to mount a tire unless you have the proper equipment and experience to perform the job. Only properly trained and equipped people should do this job. Maintain the correct tire pressure. Do not inflate the tires above the recommended pressure.**

#### SINGLE TOOLBAR HITCH

The single toolbar hitch consists of two lower hitch brackets (right and left) and one main heavy-duty center mast with tie brace and straps. The lower mounting brackets are delivered with a Cat. II pin. A Cat. I pin or a bushing for a Cat. III pin is also available. If necessary, the lower mounting brackets of the standard hitch can be mounted as a counter clamp of the planting unit.

#### DOUBLE TOOLBAR HITCH & SPACER

The planter hitch of the double toolbar consists of two lower hitch brackets (right and left) and one upper mounting bracket. The double toolbar hitch is delivered with a Cat. II hitch pin. This bracket can also be positioned to fit a Cat. III 3-point or quick hitch. The double toolbar hitch is generally used with two spacers for extra support.

#### ADVANCED HITCH

The advanced hitch allows for the placement of a unit in the center of the main toolbar. This feature gives you the option for an odd number of units on the main frame. Included in the advanced hitch are mounting brackets for placement of the gearbox in an advanced position. The hitch bar (4365.a) is semi-automatic.

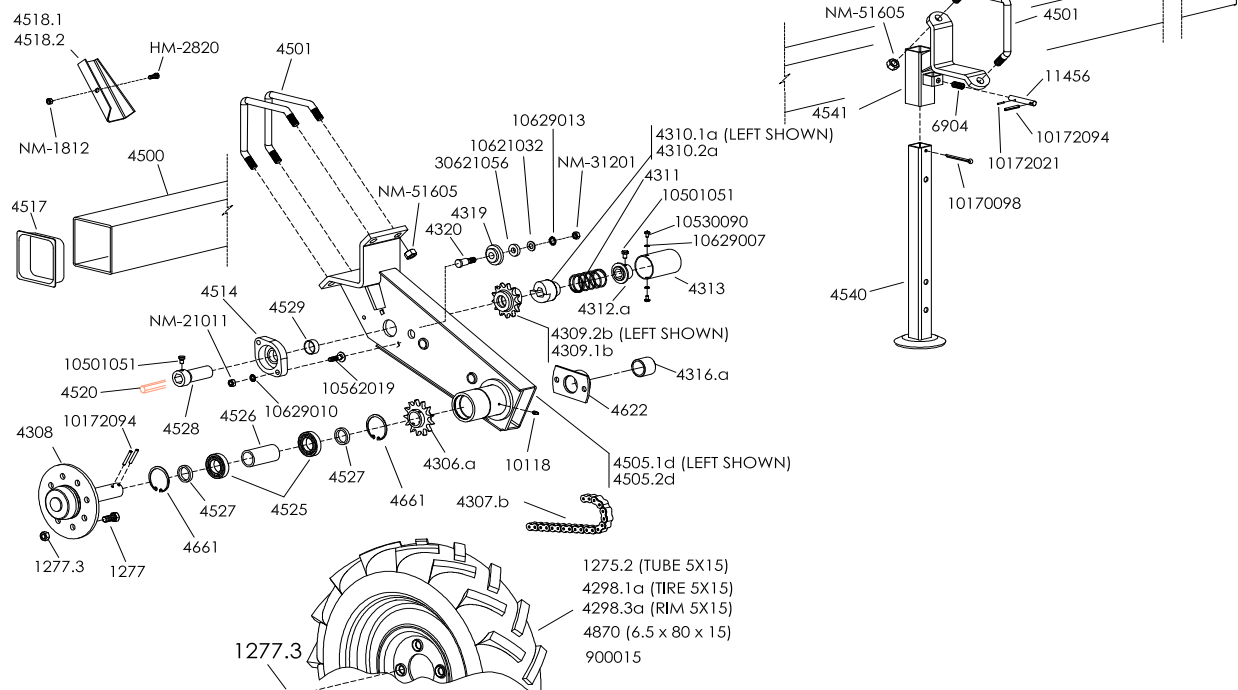


**CAUTION** Make sure that the tractor, when placed in front of the planter, does not interfere with the lock bar of the hitch. This could result in the unlocking of the hitch.

**FRAME**

**5" x 5" Mounted Frame**

**TOOLBAR STAND, HEX SHAFT, COUPLERS, BUSHING STOP, FIXED DRIVE WHEEL**



**PARTS**

PART	DESCRIPTION
1277	Bolt (14mm x 30mm)
1277.3	Lug nut, 14mm
4306.a	Sprocket Drive Wheel, 13 Tooth, 1 3/8" Bore Uses
4307.b	Chain Drive Wheel, 13N, 52 Links
4308	Hub Spindle Drive Wheel
4309.1b	Sprocket Slip clutch, LH, 13 Tooth
4309.2b	Sprocket Slip clutch, RH, 13 Tooth
4310.1a	Claw Slip clutch, LH
4310.2a	Claw Slip clutch, RH
4311	Spring Slip clutch
4312.a	Bushing Stop for Spring Clutch, uses 8x12 Bolt
4313	Housing Slip clutch, uses 6x10 Phillips Head
4316.a	Sleeve, self lubricated bushing
4319	Chain Tightening Idler
4320	Pin for Chain Tightener w/ 12mm nut
4500	5" x 5" x 1/4" wall Toolbar
4501	V bolt, 16mm
4505.1d	Wheel housing, left hand
4505.2d	Wheel housing, right hand
4514	Pillow Block Complete w/Bearing
4514.1	Bearing Only (GAY 30NPPB)
4514.2	Pillow Block Only
4517	Endcap for 5 x 5 Toolbar
4316.a	Sleeve, 35 id x44 od x35
4518.1	Front Guard Left Drive Wheel
4518.2	Front Guard Right Drive Wheel
4520	<b>Hexagon Drive Shaft</b> , specify length
4521	<b>Coupler</b> , uses 6 x 40 roll pin
4523	<b>Bushing Stop</b> , 1", uses 10 x 15 bolt
4523.1	Bushing Stop, with cross bolt
4525	Bearing 60072RS
4526	Bushing, inside 36 id x42 od x83 long

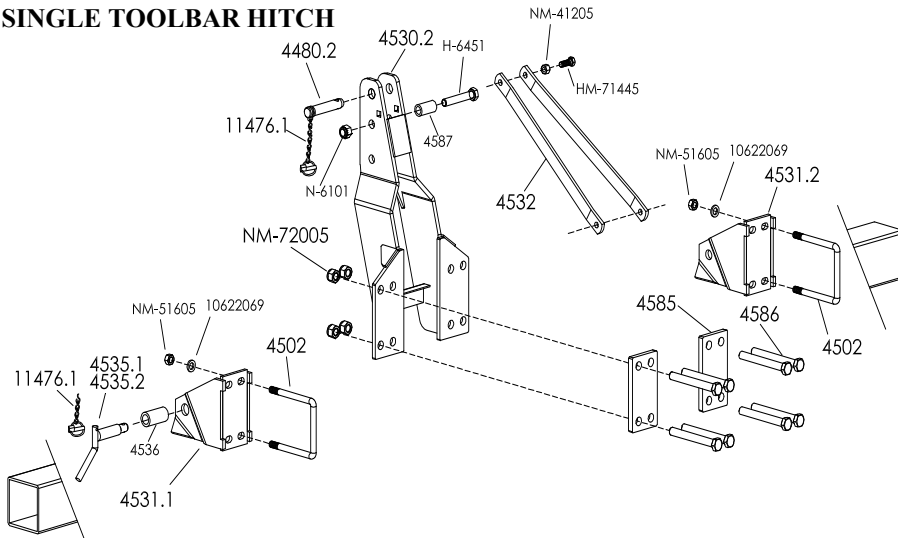
PART No.	DESCRIPTION
4527	Bushing, outside 36 id x42 od x7 long
4528	Clutch Sleeve
4529	Filler Bushing 30 id x35 od x14.25 long
4540	Support Stand Only, short stnd frame
4540.1	Support stand only, 26 1/4" tall
4541	Bracket for toolbar stand
4622	Pillow block, Special Wheel
4661	Snap ring, Internal 62
6904	Spring (R145)
10118	Grease Zerk, 6mm straight
11456	Locking pin
<b>640838</b>	<b>ASSY: Toolbar stand complete</b>
900015.1	Wheel w/rim & 5.90x15 tire, complete
10170098	Split Pin, 6 x 70
10172021	Roll Pin, 3 x 20
10172094	Roll Pin, 6 x 45
10501051	8 x 12
10530090	Screw, phillips, 6 x 10
10562019	Carriabe Bolt, 10 x 40mm
10621032	Washer 13 x 25 x 2
10629007	Washer, lock, ext tooth 6mm
10629010	Lockwasher, ext tooth 10mm
10629013	Lockwasher, ext tooth 12mm
30621056	13 x 30 x 7
AW51812	Rim Only 5.90x15
G170106152	Tire Only, 5.90 x 15
GTR-415	Stem Only
HM-2820	8 - 1.25 x 20
NM-1812	Nylon Lock Nut, 8mm
NM-21011	Hex Nut, 10 x 1.5
NM-31201	Hex Nut, 12 x 1.75
NM-51605	Nylon Lock Nut, 16mm



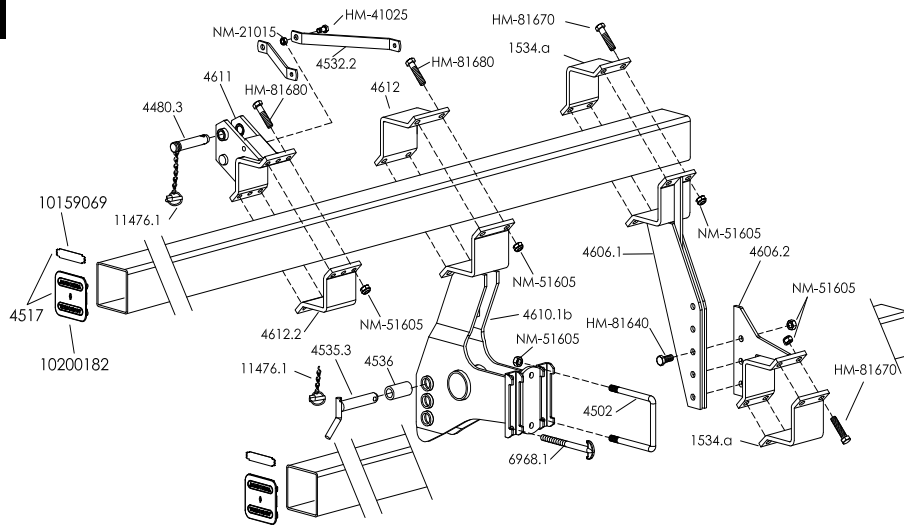
**FRAME**

**5" x 5" Mounted Frame**

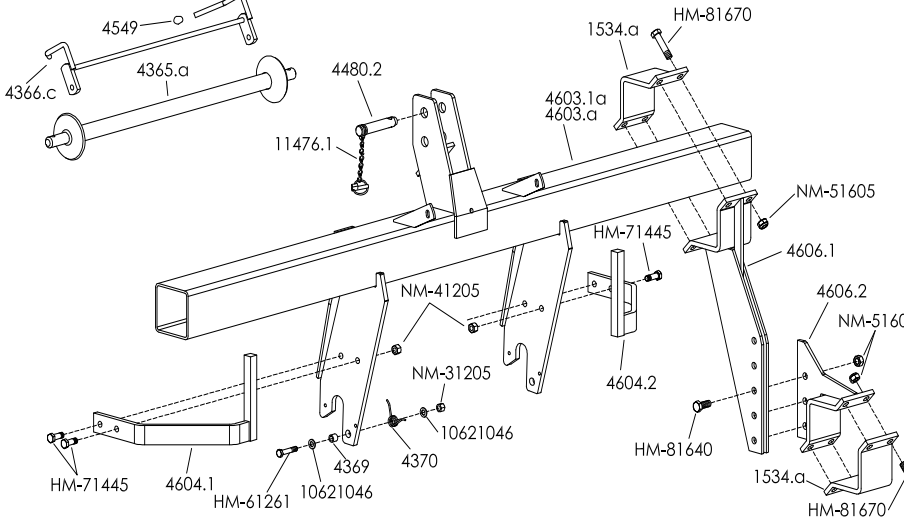
**SINGLE TOOLBAR HITCH**



**DOUBLE TOOLBAR HITCH**



**ADVANCED HITCH**



PART No.	DESCRIPTION
1534.A	Counter Clamp 120mm w/4 holes
4365.a	Hitch Bar, Semi-Automtc Hitch (A12)
4366.c	Locking Rod for Hitch Bar
4369	Sleeve Locking Rod
4370	Locking Spring
4480.2	Upper Hitch Pin, 1" DIA. X 3-3/4"
4480.3	Upper Hitch Pin, 1" DIA. X 5-3/8"
4502	U Bolt, 16mm
4517	5x5 Toolbar Endcap
4530.2	Heavy-duty Mast
4531.1	Lower 3 Pt. Bracket, Left
4531.2	Lower 3 Pt. Bracket, Right
4532	Turbofan support Straps, 3 Pt. Hitch
4535.1	Hitch Pin, Cat. 1
4535.2	Hitch Pin, Cat. 2
4535.3	Hitch Pin, CAT II
4536	Bushing for Cat. 3
4549	Plastic Cap
4585	Reinforced Hitch Plate
4586	Bolt, 20x180mm
4587	Bushing, 20 id x30 od x60mm long
4603.a	Upper Bar Advanced Hitch, 2.20m
4603.1a	Upper Bar Advanced Hitch, 2.60m
4604.1	Support Bracket Turbofan Left
4604.2	Support Bracket Turbofan Right
4606.1	Toolbar Spacer, upper
4606.2	Toolbar Spacer, lower
4610.1B	Hitch/ Spacer bracket
4611	Upper 3-Point Hitch Bracket
4612	Counter Clamp 140 mm w/ 4 holes
6968.1	T-bolt, 16mm
4612.2	Counter Clamp 140mm w/ 6 holes
11476	Lynch Pin
11476.1	Lynch Pin w/ Chain
10159069	Endcap Metal clip
10200182	Endcap, Plastic only
10621046	Washer, 13x27x2
10622069	Washer, 17.5 x 30 x 4mm
H-6451	Bolt, 7/8" x 4-1/2"
HM-41025	Bolt, 10 x 25mm
HM-71445	Bolt, 14 x 45mm
HM-81640	Bolt, 16 x 40mm
HM-81670	Bolt, 16 x 70mm
HM-81680	Bolt, 16 x 80mm
N-6101	Nylock, 3/4-10"
NM-21015	Nylock, 10mm
NM-31205	Nylock, 12mm
NM-41205	Nylock, 14mm
NM-51605	Nylock, 16mm
NM-72005	Nylock, 20mm

**PARTS**